

# Update on CBME for PGME

## May 2022

Dr. Jennifer Vergel de Dios  
Director of CBME Implementation for PGME  
[jvergeld@uwo.ca](mailto:jvergeld@uwo.ca)

### Welcome to new team members



Jane Ruttger - administrative assistant

We are happy to welcome Jane to the team! Jane is providing administrative support to the CBME Operations Team, and you can reach her at [jane.ruttger@schulich.uwo.ca](mailto:jane.ruttger@schulich.uwo.ca).

### National CBME Leads

- **\*MUST READ** Policies for the Certification of CBD Residency Model of Residency Training - February 2022 update
  - Linked [here](#), note that this links to a PDF and might automatically download onto your computer
- **2023 CBD cohort updated** to include the following programs:
  - Ophthalmology
  - Pain Medicine
  - Pediatric Emergency Medicine
- **New Royal College resources**
  - Learn the *Basics of Coaching over Time* online module
    - The first in a series, this module provides an understanding around this essential role of coaching and the value it adds for resident professional development. It includes a video interaction that demonstrates the key components for successful Coaching over Time interactions. Eligible for Section 3 MOC credits.
  - Other resources • [Program Director Handbook](#) • [Bilingual directory of medical education terminology](#) • [Updated CBD start, launch and exam schedule](#)
- **\*MUST READ** New [CBD Technical Guides](#) released

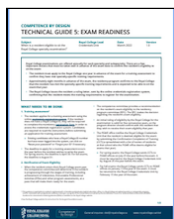
#### Technical Guide 4: Transfers



<https://www.royalcollege.ca/rcsite/documents/cbd/cbd-technical-guide-4-transfers-e.pdf>

What is required when a resident takes leave from a non-CBD program and returns after it has transitioned to CBD?

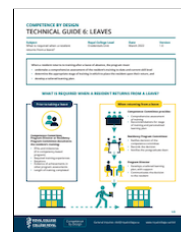
#### Technical Guide 5: Exam Readiness



<https://www.royalcollege.ca/rcsite/documents/cbd/cbd-technical-guide-5-exam-readiness-e.pdf>

When is a resident ready to sit the Royal College specialty examination?

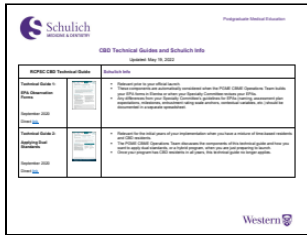
#### Technical Guide 6: Leaves



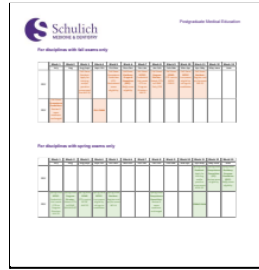
<https://www.royalcollege.ca/rcsite/documents/cbd/cbd-technical-guide-6-leaves-e.pdf>

What is required when a resident transfers from a non-CBD program to a CBD program?

## PGME CBME Operations Team



**\*MUST READ** We have a memo, [PGME Memo on CBD Technical Guides](#), that details concise information about each technical guide with the relevant PGME policy



### Exam Memo, FAQ & Timelines

**\*MUST READ** We have also compiled a [brief exam-related memo and FAQ](#) that answers questions not covered in the latest Policies for Certification in a CBD Model of Residency Training or Technical Guide 5

**\*MUST READ** Timelines of the steps done by residents, CCs, RPCs, PGME and the Royal College is also included and in a separate document

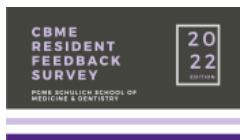
- Our [website](#) has been updated to show all important CBD-related Royal College and PGME policies and guides
- **Will you have new CBME leads, CC Chairs, or CC members?** As the new academic year is around the corner, please keep us updated so we can ensure our contact lists are accurate

### Operations Team resources

- **Curriculum map templates** - updated these templates to reflect the important yet different audiences. We will adopt these going forward, but if you want to update your existing curriculum maps, email Susan Ibdah ([susan.ibdah@schulich.uwo.ca](mailto:susan.ibdah@schulich.uwo.ca)) and she can work through these with you
  - Map for **surveyors** for accreditation: based on the CanERA guidance on what is mandatory
  - Maps for **PDs/programs**: ensuring all document suites are used (EPAs, Competencies, Training Experiences) and how to best organize all components of teaching and assessments
  - Maps for **residents**: distilling the key information needed for residents regarding EPAs and rotations
- **Rotation templates** - updated to show a complete overview, from 2- to 6-year programs, of rotations and key events by blocks in the academic year
- **Competence Committee meeting minutes [template](#)**
  - We have added to our [website](#) a [template](#) of CC meeting minutes with some example sections that could be applicable for most programs to highlight the need to document CC activities and discussions beyond resident assessment and progression data that are found in reviewer reports

### Residents

- **Resident feedback survey.** The 2022 resident feedback on CBD report is now available on our [website](#). We added questions about the effects of COVID, the utility of milestones, the flexibility in the numbers 'required', and if they feel CBD has been a threat to their career. The last two questions were concerns brought forth by the RCPSC from their discussions with Resident Doctors of Canada.



- **New RAC-CBME Resident Co-Chairs.** Welcome to **Dr. Leo Calderon** (PGY-2, Internal Medicine) and **Dr. Mais Nuaaman** (PGY-2, Internal Medicine) who will be our incoming Resident Co-Chairs! PDs and program CBME Leads can also forward names of interested residents to be general committee members.

## Events

### Schulich Events

Event	Date & Time	Details
<b>Zoom drop-in sessions</b>	Thursday, May 26 1300-1400  Thursday, June 23 1300-1400	The PGME CBME Operations Team is offering Zoom drop-in sessions for the 2022 programs. The first drop-in was on March 17. Although this is targeted to 2022 programs, any CBD program is also welcome to join to ask the drop-in session in which all team members will be present to answer any of your questions. Stay for however long you'd like.  Thursday, May 26 <a href="https://westernuniversity.zoom.us/j/94650749517">https://westernuniversity.zoom.us/j/94650749517</a> Thursday, June 23 <a href="https://westernuniversity.zoom.us/j/91772749827">https://westernuniversity.zoom.us/j/91772749827</a>
<b>Faculty development doesn't stop after you launch CBD!</b> <b>We can come to your program and provide a presentation or facilitated discussion.</b> <b>You just need to tell us when and we customize it to your needs.</b>		
<b>CBD Refreshers</b> For Faculty For Residents For Both	Date and time of your choosing	This can be part of your rounds, staff meetings, or resident academic half day. We spend the first half going over the basics and latest features of Elentra, the data sources of your faculty's performance, and common myths. The other half is for open discussion. Contact <a href="mailto:jvergeld@uwo.ca">jvergeld@uwo.ca</a> if interested
<b>RX-OCR Workshops</b> For Faculty	Date and time of your choosing	Based on the Royal College's coaching framework, RX-OCR (Rapport, Expectation, Observe, Coach, Record), we facilitate open discussions as faculty explore their role as coaches in the moment for their learners. This is available for Section 3 MOC credits. Contact <a href="mailto:susan.ibdah@schulich.uwo.ca">susan.ibdah@schulich.uwo.ca</a> if interested

### Royal College Events

Event	Date & Time
SAVE THE DATE 2022 International Conference on Residency Education (ICRE)	October 27-29, 2022
SAVE THE DATE New Program Director Workshop	November 18, 2022